

ID	SEGMENT_ID	NERS	F-02	SP-3	F-03	SP-04	SP-05	F-05	SP-06	FL-06
1	Lower Chaney Creek: culvert to Rock Dam (includes pond)	TNC	0	0	0	0	0	0	0	0
2	Stalker Creek Restoration Project: Rock Dam to Power Lines	TNC	0	0	2	0	0	0	0	0
3	Stalker Creek: Power Lines (public boundary) to Stalker Bridge	TNC	0	0	9	1	3	4	3	13
4	Lower Stalker Creek: Stalker Bridge to Confluence Area	TNC	22	15	27	3	18	6	20	28
5	Upper Silver Creek: Grove Creek fence to Old Farm Bridge	TNC	58	153	276	49	138	167	68	130
6	Upper Silver Creek: Old Farm Bridge to T2-Visitor Center	TNC	20	25	44	8	22	26	7	49
7	Upper Silver Creek: T2-Visitor Center to T1-Upper "S" bends	TNC	20	20	18	4	8	7	6	20
8	Loving Creek: entirety of TNC ownership	TNC	0	0	0	0	0	0	2	1
9	Upper Silver Creek: T1-Upper "S" bends to Kilpatrick Bridge	TNC	2	2	3	2	0	0	0	0

Note- Spring 2005 flood v

Inland Northwest Program
505 Front Ave., Suite 305
Coeur d'Alene, ID 83814
tel [208] 676.8176
fax [208] 676.9176

Silver Creek Preserve
P.O. Box 624
Pocatello, ID 83448
tel [208] 788.7910
fax [208] 578.0694

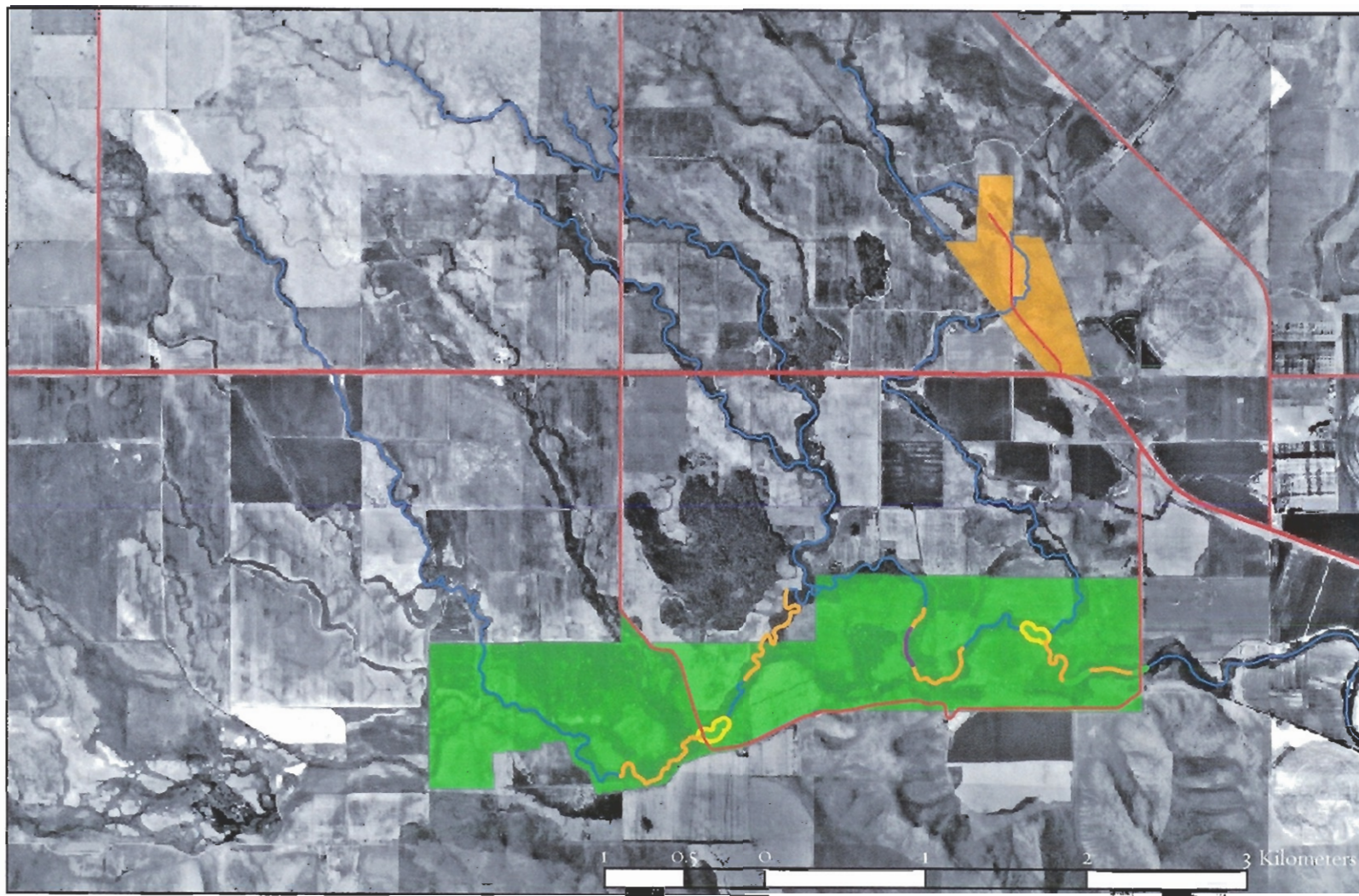
East Idaho Office
381 Shoup Avenue, Suite 203
Idaho Falls, ID 83402
tel [208] 522.4350
fax [208] 522.4944

Thousand Springs Preserve
1205 Thousand Springs Grade
Wendell, ID 83355
tel [208] 536.6797
fax [208] 536.1719

Boise Office
1109 Main Street, Suite 333
Boise, ID 83702
tel [208] 343.8826
fax [208] 343.8892

HISTORIC AND PRESENT ELECTRO-SHOCKING SITES






SILVER CREEK PRESERVE & AREAS UPSTREAM



ELECTRO-SHOCKING SYMBOLS

-  USGS 2001
-  Fish & Game 1963
-  Fish & Game 1987
-  Fish & Game 1966

OTHER SYMBOLS

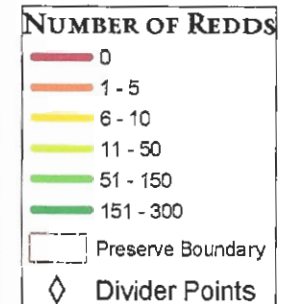
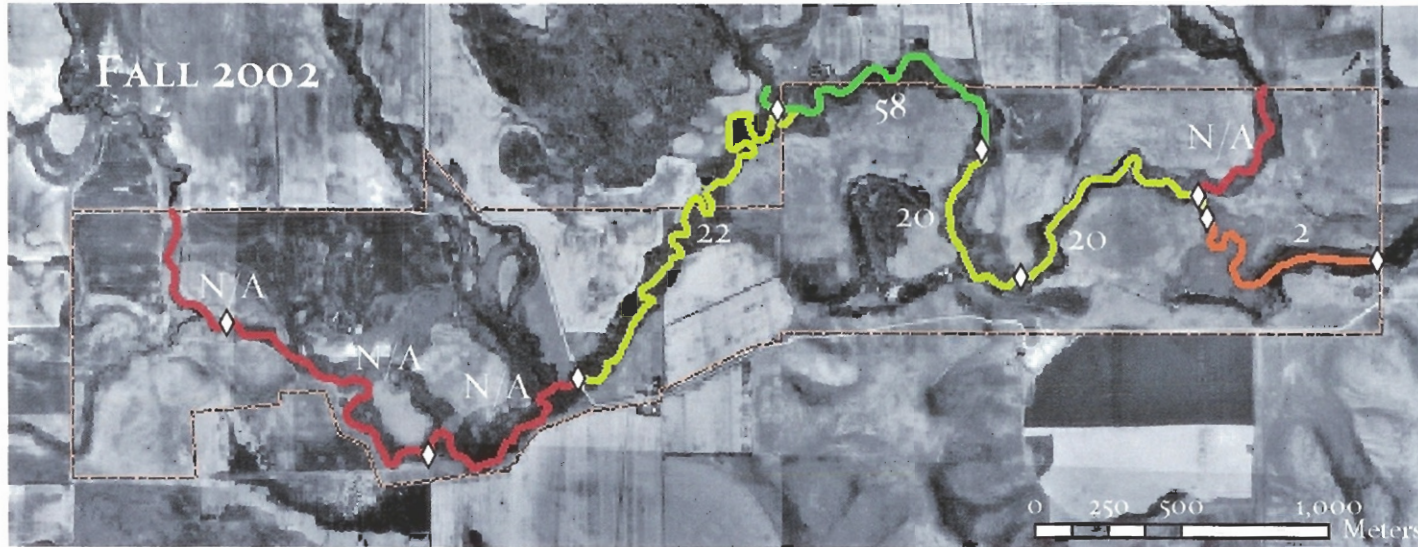
-  Blaine Co. Roads
-  Hayspur Fish Hatchery
-  US-20
-  Point of Rocks
-  Silver Creek Preserve

The Nature Conservancy 

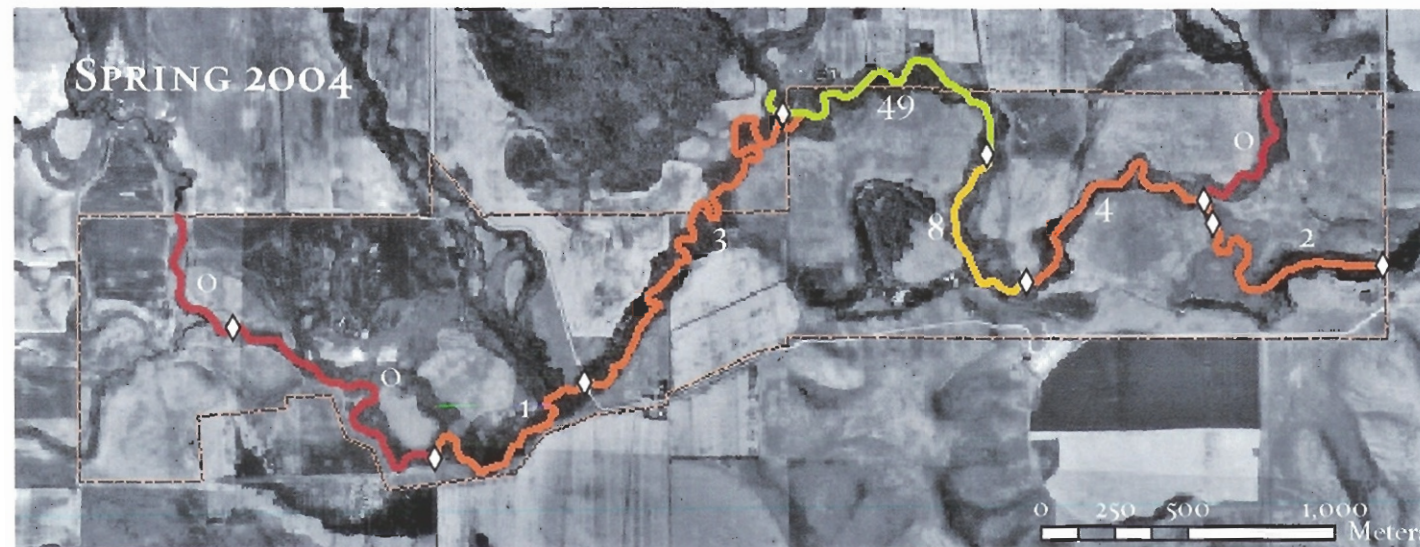
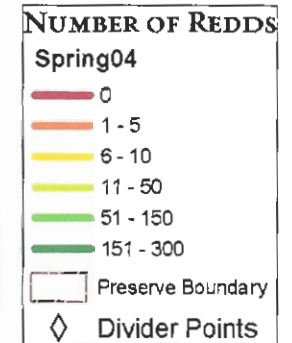
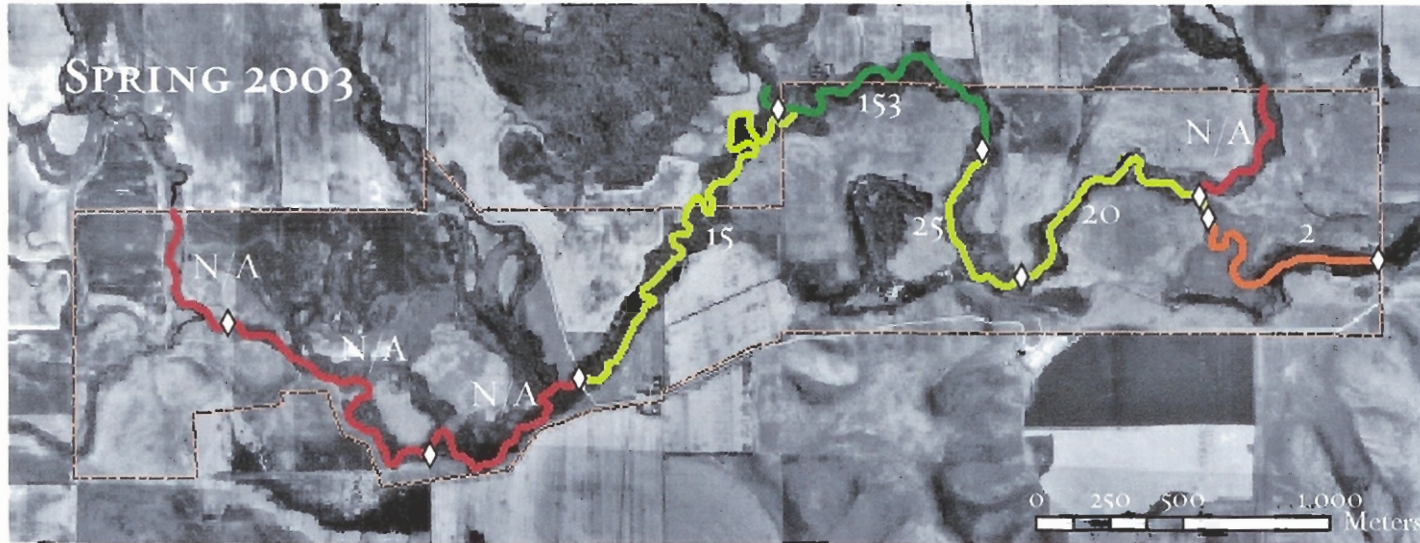
SAVING THE LAST GREAT PLACES ON EARTH

BRIAN S. MCCURDY, 2004

BROWN TROUT SPAWNING REDDS SILVER CREEK PRESERVE, IDAHO



RAINBOW TROUT SPAWNING REDDS SILVER CREEK PRESERVE, IDAHO

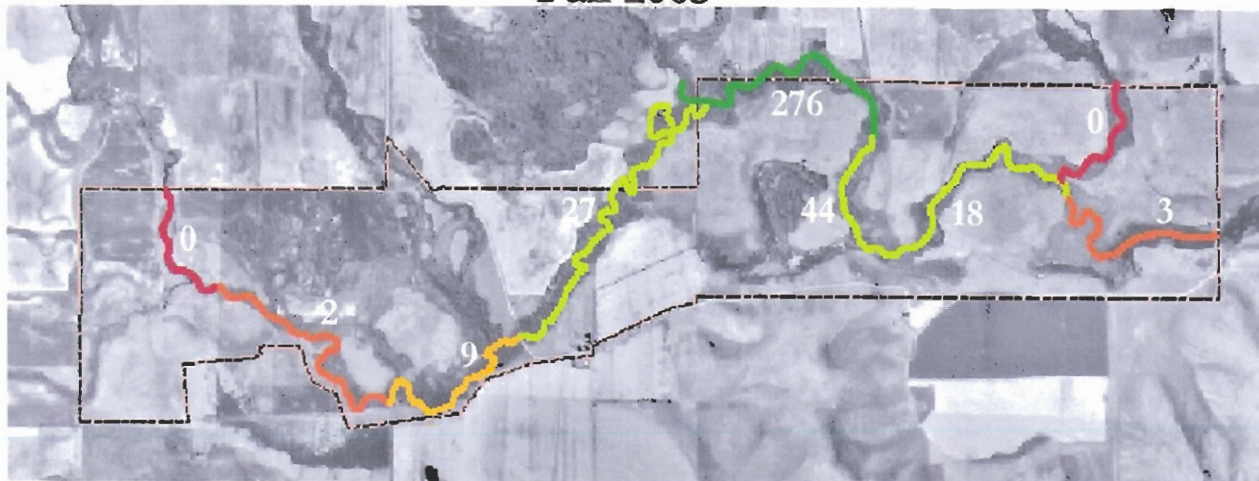


Brown Trout Spawning Redds on the Silver Creek Preserve

Fall 2002



Fall 2003



Spawning Symbols

Number of Redds

- 0
- 1 - 5
- 6 - 10
- 11 - 50
- 51 - 150
- 151 - 300

Preserve Boundary

Summary -

ID	SEGMENT_ID	OWNERSHIP	FALLO2	SPRINGO3	FALLO3	SPRINGO4
1	Lower Chaney Creek: culvert to Rock Dam (includes pond)	TNC	0	0	0	0
2	Stalker Creek Restoration Project: Rock Dam to Power Lines	TNC	0	0	2	0
3	Stalker Creek: Power Lines (public boundary) to Stalker Bridge	TNC	0	0	9	1
4	Lower Stalker Creek: Stalker Bridge to Confluence Area	TNC	22	15	27	3
5	Upper Silver Creek: Grove Creek fence to Old Farm Bridge	TNC	58	153	276	49
6	Upper Silver Creek: Old Farm Bridge to T2-Visitor Center	TNC	20	25	44	8
7	Upper Silver Creek: T2-Visitor Center to T1-Upper "S" bends	TNC	20	20	18	4
8	Loving Creek: entirety of TNC ownership	TNC	0	0	0	0
9	Upper Silver Creek: T1-Upper "S" bends to Kilpatrick Bridge	TNC	2	2	3	2

last survey 2 people - counting everything
 Record in the log not lower CT

2 surveys of each section
 # shown as highest final survey #

Segment Date sample class } # of redd species
 RB
 EB
 WF
 LL = Brown trout





STREAM SEGMENTS FOR COUNTING SPAWNING REDDS

SILVER CREEK PRESERVE, IDAHO



Description of Segments

- Segment 1: Lower Chaney Creek - the culvert (property line) to the rock dam
- Segment 2: Stalker Creek Restoration Project - the rock dam to the power lines/barbed wire
- Segment 3: Stalker Creek - power lines/barbed wire to the Stalker Creek Bridge
- Segment 4: Lower Stalker Creek - Stalker Creek Bridge to the confluence area (including side-channel)
- Segment 5: Upper Silver Creek - Grove Creek fenceline to the Old Farm Bridge
- Segment 6: Silver Creek - Old Farm Bridge to existing Transect 2 (near Visitor's Center)
- Segment 7: Silver Creek - Transect 2/Visitor's Center to Transect 1 (above "S" bends)
- Segment 8: Loving Creek - fence line/property line to mouth at Silver Creek
- Segment 9: Silver Creek - Transect 1 to Kilpatrick Bridge

-  Stream Sections
-  Blaine Co. Rds.
-  Preserve Boundary
-  break_points_TNC

Stream Segment in GIS

of Redds observed

ID	SEGMENT_ID	OWNERSHIP	SPRING04	Date
10	Upper Grove Creek: springheads to Punkin Center Rd. Bridge	O'Gara	N/A	
11	Grove Creek: Pnkin Center Rd. Bridge to property border	3 Creeks	19	4/16/04
12	Grove Creek: proerty border to US 20 bridge	Foley	N/A	
13	Grove Creek: US 20 Bridge to property line	Judd	N/A	
14	Lower Grove Creek: property line to TNC property	Foley	N/A	
15	Upper Wilson Creek: springheads to property border	O'Gara	N/A	
16	Wilson Creek: property border to Punkin Center Rd. Bridge	Springs	6	4/16/04
17	Wilson Creek: Punkin Center Rd. Bridge to US 20 Bridge	Foley	N/A	
18	Wilson Creek: US 20 Bridge to property border	Schoen	N/A	
19	Lower Wilson creek: property border to Grove Creek	Judd	N/A	
20	Upper Chaney Creek: springheads to US 20 Bridge	O'Gara	N/A	
21	Chaney Creek: US 20 Bridge to property border	Rogers	N/A	
22	Chaney Creek: property border to property border	CCC (Gray)	19	4/16/04
23	Chaney Creek: property border to property border	Rogers	N/A	
24	Chaney Creek: property border to cement culvert	CCC (Gray)	7	4/16/04
25	Upper Loving Creek: springs to property boundary	Woods?	N/A	
26	Loving Creek: property border to ID F&G property	Bashaw?	N/A	
27	Loving Creek: ID F&G property	ID F&G	N/A	
28	Loving Creek: ID F&G boundary to US 20 Bridge	Aubrey S	N/A	
29	Loving Creek: US 20 Bridge to bottom of pond	Woods	39	3/31/04
30	Loving Creek: bottom of pond to TNC property	Woods	10	3/31/04

Single day survey

Criteria

Stages

↳ depression

↳ tail out

↳ color

↳ Redd comply with depression counted

Summary

ID	SEGMENT_ID	OWNERSHIP	FALLO2	SPRINGO3	FALLO3	SPRINGO4
1	Lower Chaney Creek: culvert to Rock Dam (includes pond)	TNC	0	0	0	0
2	Stalker Creek Restoration Project: Rock Dam to Power Lines	TNC	0	0	2	0
3	Stalker Creek: Power Lines (public boundary) to Stalker Bridge	TNC	0	0	9	1
4	Lower Stalker Creek: Stalker Bridge to Confluence Area	TNC	22	15	27	3
5	Upper Silver Creek: Grove Creek fence to Old Farm Bridge	TNC	58	153	276	49
6	Upper Silver Creek: Old Farm Bridge to T2-Visitor Center	TNC	20	25	44	8
7	Upper Silver Creek: T2-Visitor Center to T1-Upper "S" bends	TNC	20	20	18	4
8	Loving Creek: entirety of TNC ownership	TNC	0	0	0	0
9	Upper Silver Creek: T1-Upper "S" bends to Kilpatrick Bridge	TNC	2	2	3	2

100% of the property - County is the owner
 100% of the property - County is the owner

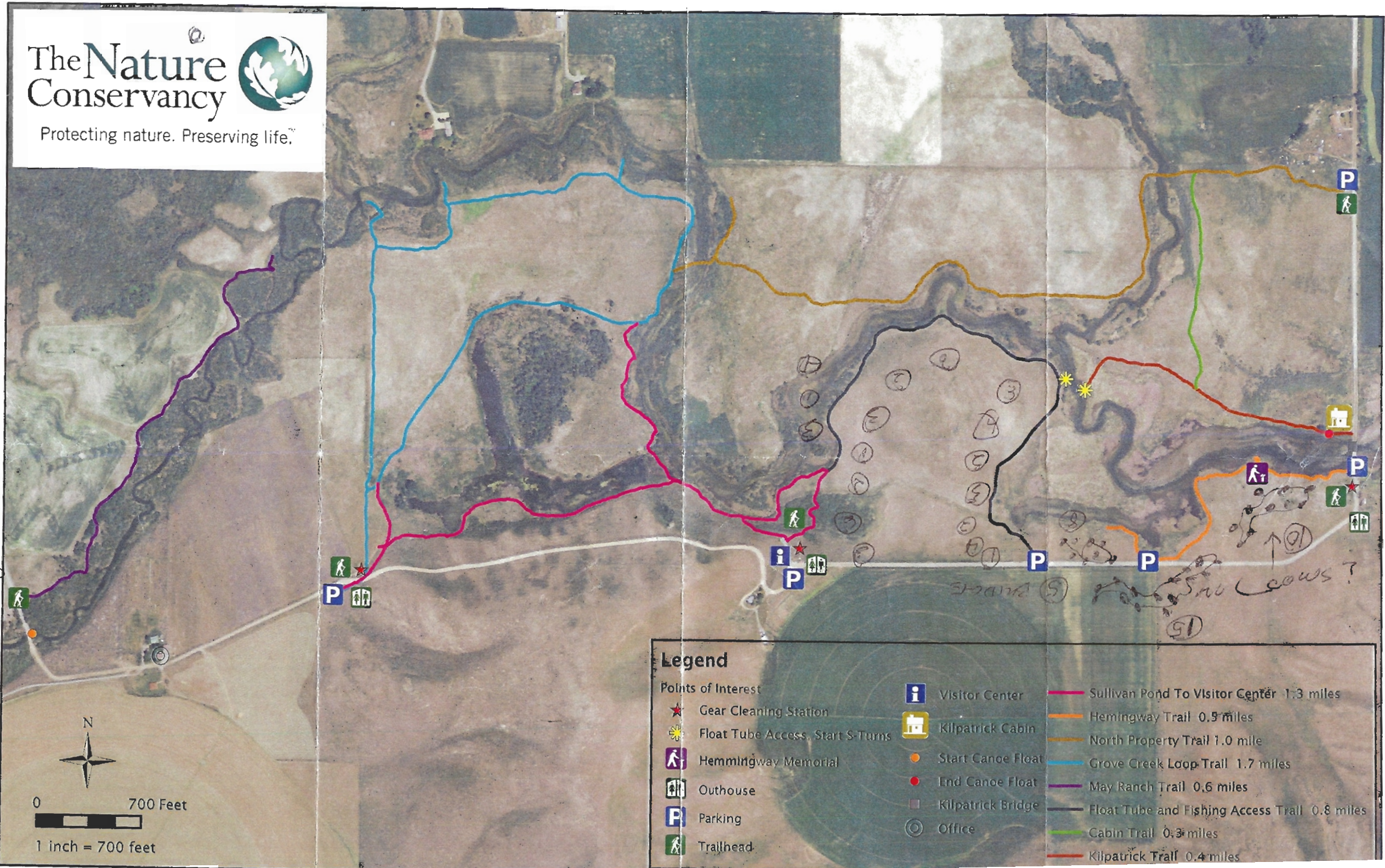
100% of the property - County is the owner
 100% of the property - County is the owner

Notes
 Sample Class # of birds species
 RB
 EB
 WF
 LL = Brown trout

The Nature Conservancy



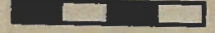
Protecting nature. Preserving life.™



Redd Gault 5/14/14
 95



0 700 Feet

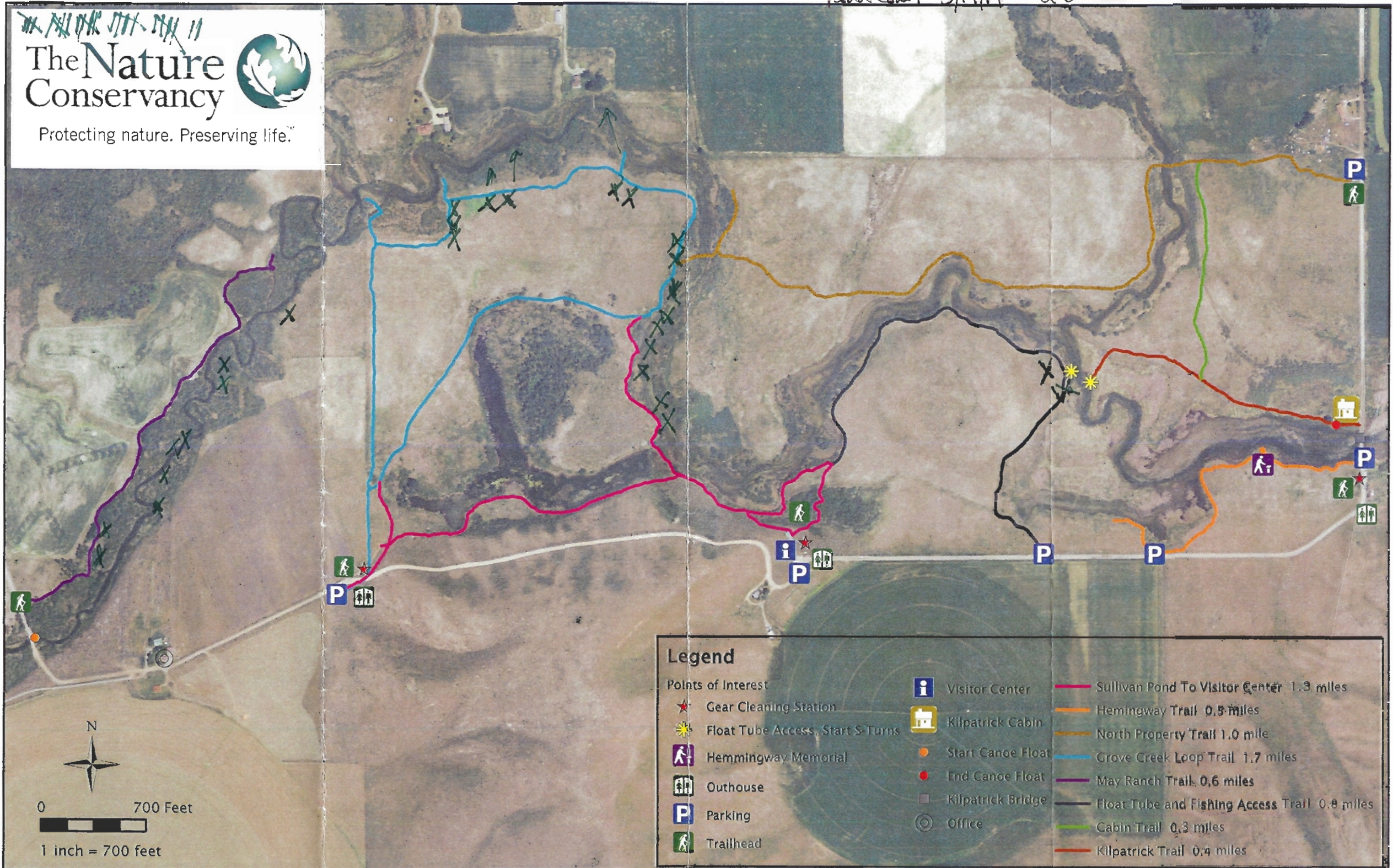


1 inch = 700 feet

Legend

- | | | | | | | | | | | | | | | | | | | | | |
|----------------------|-------------------------|------------------------------------|-----------------------|------------|-----------|-------------|------------------|--------------------|---------------------|-------------------|---------------------|----------|---|-----------------------------|---------------------------------|------------------------------------|-----------------------------|---|-------------------------|------------------------------|
| ★ Points of Interest | ☆ Gear Cleaning Station | ☀ Float Tube Access, Start S-Turns | 🚶 Hemmingway Memorial | 🚻 Outhouse | 🅑 Parking | 🚶 Trailhead | 📍 Visitor Center | 🏠 Kilpatrick Cabin | 🟠 Start Canoe Float | 🔴 End Canoe Float | 🏠 Kilpatrick Bridge | 🕒 Office | 🟡 Sullivan Pond To Visitor Center 1.3 miles | 🟠 Hemingway Trail 0.5 miles | 🟡 North Property Trail 1.0 mile | 🟡 Grove Creek Loop Trail 1.7 miles | 🟡 May Ranch Trail 0.6 miles | 🟡 Float Tube and Fishing Access Trail 0.8 miles | 🟡 Cabin Trail 0.3 miles | 🟡 Kilpatrick Trail 0.4 miles |
|----------------------|-------------------------|------------------------------------|-----------------------|------------|-----------|-------------|------------------|--------------------|---------------------|-------------------|---------------------|----------|---|-----------------------------|---------------------------------|------------------------------------|-----------------------------|---|-------------------------|------------------------------|

Sullivan Pond
 Saw cows?
 51



Legend

★ Gear Cleaning Station	🏠 Kilpatrick Cabin	— Sullivan Pond To Visitor Center 1.3 miles
☀️ Float Tube Access, Start S-Turns	🚶 Start Canoe Float	— Hemingway Trail 0.5 miles
🚶 Hemmingway Memorial	🛑 End Canoe Float	— North Property Trail 1.0 mile
🚽 Outhouse	🏠 Kilpatrick Bridge	— Grove Creek Loop Trail 1.7 miles
🅑 Parking	🕒 Office	— May Ranch Trail 0.6 miles
🚶 Trailhead		— Float Tube and Fishing Access Trail 0.8 miles
		— Cabin Trail 0.3 miles
		— Kilpatrick Trail 0.4 miles

